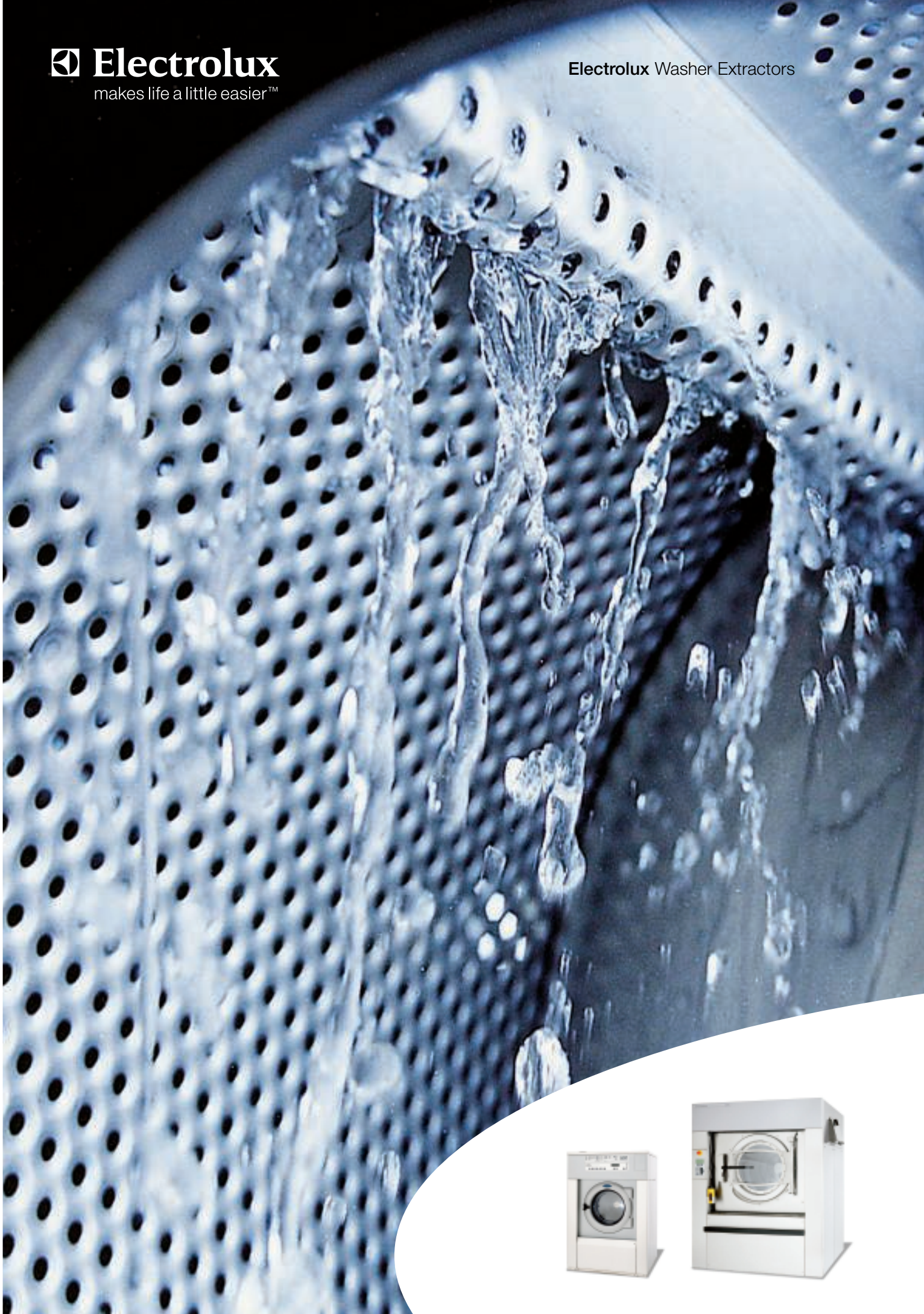


 **Electrolux**
makes life a little easier™

Electrolux Washer Extractors



How about a washer extractor made just for you

Electrolux's range of washer extractors is redefining laundry systems. Based on modules, we can design a customised, total solution that meets your specific laundry needs. Whether you run a small, self-service laundry or a large professional laundry, you will still enjoy efficient, user-friendly operation and excellent laundry results.

Every laundry is different

Electrolux's wide range of washer extractors are based on our well-proven designs and extensive laundry process know-how. But we've also listened to you — about your special laundry needs.

The logical answer to your laundry needs

Our range of equipment makes true customisation possible because it is based on functional modules. You will be able to use less water, less detergent and less energy, whilst still enjoying total reliability, optimal laundry economy and a quality wash result — load after load.

Discover the benefits

We have added a number of new ergonomic features that promote ease of use and ensure user safety. Our modular range significantly reduces the number of parts used. This means fewer parts that need replacing. In addition, the machines' modular design simplifies servicing and reduces maintenance requirements.

Boost the efficiency of your laundry operation by discovering the benefits of a tailor-made washer extractor.



W455H



W3600X



W365H

Wide range

To ensure a quick return on investment, Electrolux Laundry Systems offers normal-, medium-, extra- and high-spin machines. In general, if low initial investment is a priority, normal-spin machines are the answer. Where short process times and low operating costs are crucial, high-spin machines are optimal.



W3240H



W3850H

Take a closer look

And discover what the excitement is all about



Finally, a perfect balance

Optimised economy and a superior wash



The inner drum of the majority of our washers is designed with spray lifters. As the drum rotates, water is sprayed onto the garments — speeding up the soaking process and shortening the wash cycle.

Electrolux washer extractors combine leading-edge microprocessor controls with an optimised machine design. As a result, we've been able to reduce water, energy and detergent consumption — and maintain high wash and rinse performance.

Why waste water and energy?

Electrolux remains at the forefront in minimising water and energy consumption. If low water consumption is a priority, we supply machines that require less than 11 liters of water per kilogram laundry (60°C programme without pre-wash).

What's more, less water requires less electricity to heat it — and less detergent. This is direct savings and it's good for the environment.



The drain valve is directly connected to the outer drum — optimising the use of water and detergent.

Efficient drum action

The frequency-controlled motor helps ensure quality by providing flexibility in the drum action, such as an extra gentle wash for delicate garments. Efficient extraction sequence that minimises water and energy consumption is an additional benefit.

Fast, effective water extraction

Electrolux high-spin washer extractors provide up to 350 G-force extraction that ensures high water removal capacity. Less water in the garments when the cycle is complete means less time and energy needed in the drying and finishing process.

SuperBalance™

SuperBalance™ is a precision system for our high-spin washer extractors that automatically detects weight imbalances in the drum. SuperBalance™ allows extraction to always proceed at maximum feasible G-force — saving time and ensuring long machine life.

Dosing of detergents

Our machines are prepared for manual dosage of powder detergents, connection to a system for liquid injection, or a combination of both. Signals for additional supply of detergents are also available.

Designed for you

Safe and simple operation



Electrolux washer extractors are equipped with a number of user-friendly features that will make a big difference in your day-to-day operations.

Enlarged door opening

For ease of loading and unloading, all machines are designed with large door openings. And the design of the hinges allows the door to open wide for easy access.

User-friendly panel

On our smaller models, the panel is tilted so that it is easy to see and to operate. Select a programme and press start — clear and simple. It could not be any easier.

Quiet operation

Our washer extractors are built for quiet operation. In fact, the noise level on some models is as low as 71dB(A). This feature contributes to a comfortable working environment.

Ergonomic handle with quick release

The ergonomic design of the handle and the new door gasket combined reduces strain on the wrist when opening the door. A new end-of-programme sequence makes it possible to open the door immediately after the drum has stopped rotating.

Safety tested

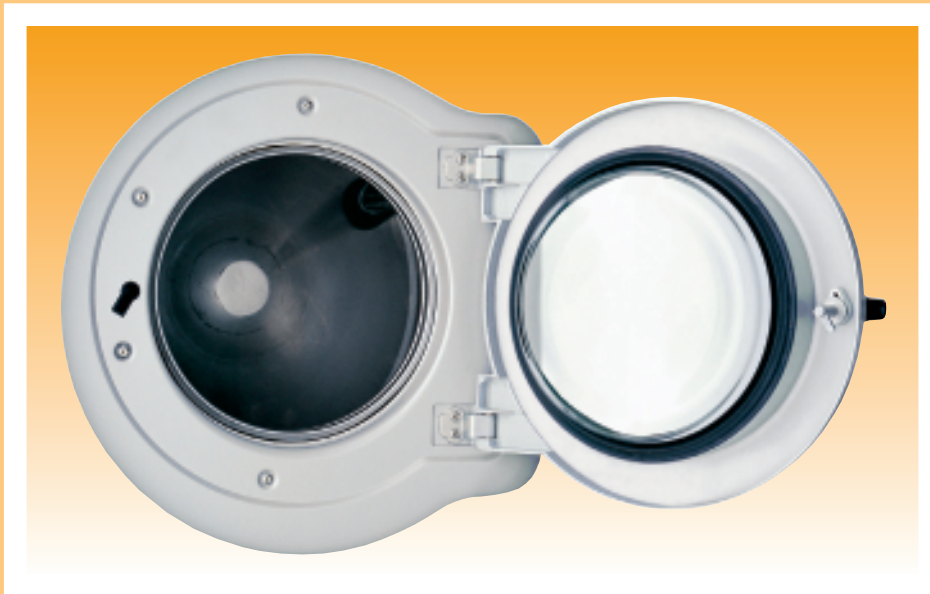
All Electrolux washer extractors are CE approved for electrical safety. In addition, our machines are spray-proof according to EN 60335-1/IEC 529 class IP 24D.



Panel for Exacta control®

Built to last

Wash after wash



The rugged steel door hinges are designed and built for heavy operation and abuse.

To minimise service and maintenance requirements, the number of parts in our range are kept to a minimum. The drain valve, for example, is controlled by water pressure. This valve has no internal electrical parts which in conventional machines can be damaged by water leakage.

Durable, slip-lock handle

If a user tries to open the machine's door while the lock is activated, the handle simply rotates in either direction. As a result, it's virtually indestructible — reducing costs for servicing and replacement.

Perfectly balanced drum assembly

The drum assembly on our high-spin models rests on heavy steel springs and shock absorbers. This ensures a perfect balance for low noise and smooth operation. Robust industrial ball bearings and gaskets ensure long life.



Riveted frames for normal and medium-spin models

Only Electrolux uses riveted machine frames in all normal-spin washer extractors. This feature ensures extreme strength and durability. No welding means no cracking! The same riveting technique is used in building aircraft wings.

Four-layered protection

All metal parts in the frame and the cabinet are manufactured in galvanised steel. The cabinet panels are surface-treated in four layers including galvanisation and powder painting for optimal protection against rust and corrosion.

Simple servicing

Generous space inside the machine, the single platform and the modular-based design ensure easy access to all components and controls which means that service work can easily be carried out. The service organisation only needs to learn the technology of one platform and the availability of spare parts is improved.

Quick connect wiring harnesses are keyed so they only fit in exactly the right position, making service much simpler than conventional washer extractors.

Precision and flexibility

Control at your fingertips



Clarus® control features a large display and a simple menu system. The system also comes with a reader for smart memory cards for maximum flexibility and ease of use.

Clarus® control provides professional laundries with functions for programming, operation and service. You will enjoy 9 standard programmes and the possibility of up to 192 individual programmes.

Create your own programmes

The high-precision microprocessor gives you absolute control over the entire wash process. You can quickly and easily create new wash programmes in a modular programming system, or fine-tune existing programmes to suit different types of textiles and degrees of soiling.

Clarus® control correlates timing, water levels, and washing temperatures. As a result, you are able to optimise the use of water, detergents and energy — ensuring excellent wash performance and operational economy.

Monitors vital components

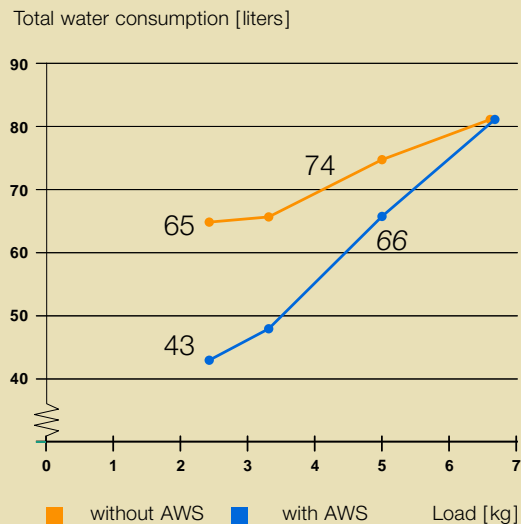
An automatic service function continuously tests and monitors vital components. What's more, service and maintenance intervals can be pre-set. Clarus® control is also equipped with a versatile statistics function and built-in safety interlocks to ensure maximum reliability and safety. For additional flexibility, Clarus control® can be connected with an automatic dosing system.

For process reporting, these machines can be included in our Certus Management Information System™ — CMIS (see page 14).

Automatic Weighing System

The Automatic Weighing System (AWS), a software programme built into the wash cycle, comes standard with Exacta control®.

With each wash cycle, AWS automatically determines the weight of the load and adds precisely the right amount of water. The result is reduced water consumption and less water to be heated — reducing energy costs. AWS can also be connected with an automatic dosing system to optimise the detergent dosing to the reduced water level.



Valid for W365H model



Exacta control® is available in many versions to meet the specific needs of apartment house laundries, coin-ops, mop cleaning, hygiene/hospital applications, quick service restaurants and camping sites.

Exacta control® is a microprocessor control with up to seven programmes and up to four additional functions — providing up to 28 different wash programme combinations. The display can show the remaining time to the end of the wash cycle; the actual temperature of the water in the drum; the number of coins to be inserted in coin-operated machines; and error indications. The programme indicator shows the step in progress, such as pre-wash, main wash, rinses or final extraction.

Additional functions

To maximise wash performance, Exacta control® can also offer additional functions. The heavily soiled programme, for example, adds a prewash

and extends the main wash. The Quick programme reduces cycle time and water temperature — perfect for lightly soiled linen. For delicate garments, the Rinse stop ensures that water remains in the drum after the last rinse. The extra rinse function adds a rinse cycle.

Built-in service programme

Exacta control® includes a service programme that makes it possible to check the condition of the machine and adjust a wide range of parameters in the programme. A built-in diagnostic programme offers error detection and an RS 232 outlet for external communication to the central payment and management systems.



Classic control is a reliable, user-friendly control system that offers a variety of fixed wash programmes.

Classic control for normal-spin machines

Classic control is a traditional electromechanical timer designed specifically for Electrolux normal-spin washer extractors.

To meet the specific needs of your laundry operation, Classic control is available in two versions. The on premises laundry version offers ten differ-

ent wash programmes for light or heavy soiled laundry. Ideal for heated-type machines, this version ensures the correct cycle time and water temperature.

The launderette version provides five short and efficient wash programmes, and is primarily intended for non-heated machines.

Big, strong, silent types



Our latest addition to the Electrolux range is the W3600H which has a capacity of 60 kg. The W3600H further extends the extensive range of high capacity washers Electrolux offers — from 40, 60 and 85 to 110 kg. All Electrolux washer extractors are designed to meet the needs of commercial laundries and on premises laundries, such as hotels and hospitals.

A productivity boost

Like all Electrolux washer extractors, these machines are designed to keep operational costs to a minimum. In fact, they require substantially less water and less energy — without compromising quality.

These machines feature a frequency-controlled motor for maximum versatility and a highly effective drum action. What's more, the high extraction force ensures efficient dewatering for reduced process time and energy savings. For greater flexibility and control, our large machines are equipped with Clarus® control (see page 8). They are easily integrated with CMIS for true process control, monitoring and validation (see page 14). The machines are also prepared for 13 liquid detergent signals and 8 liquid supply connections.

As an option, the four high capacity washers can be equipped with Forward Tilting and controllable reversing action for unloading.

Ergonomics in action

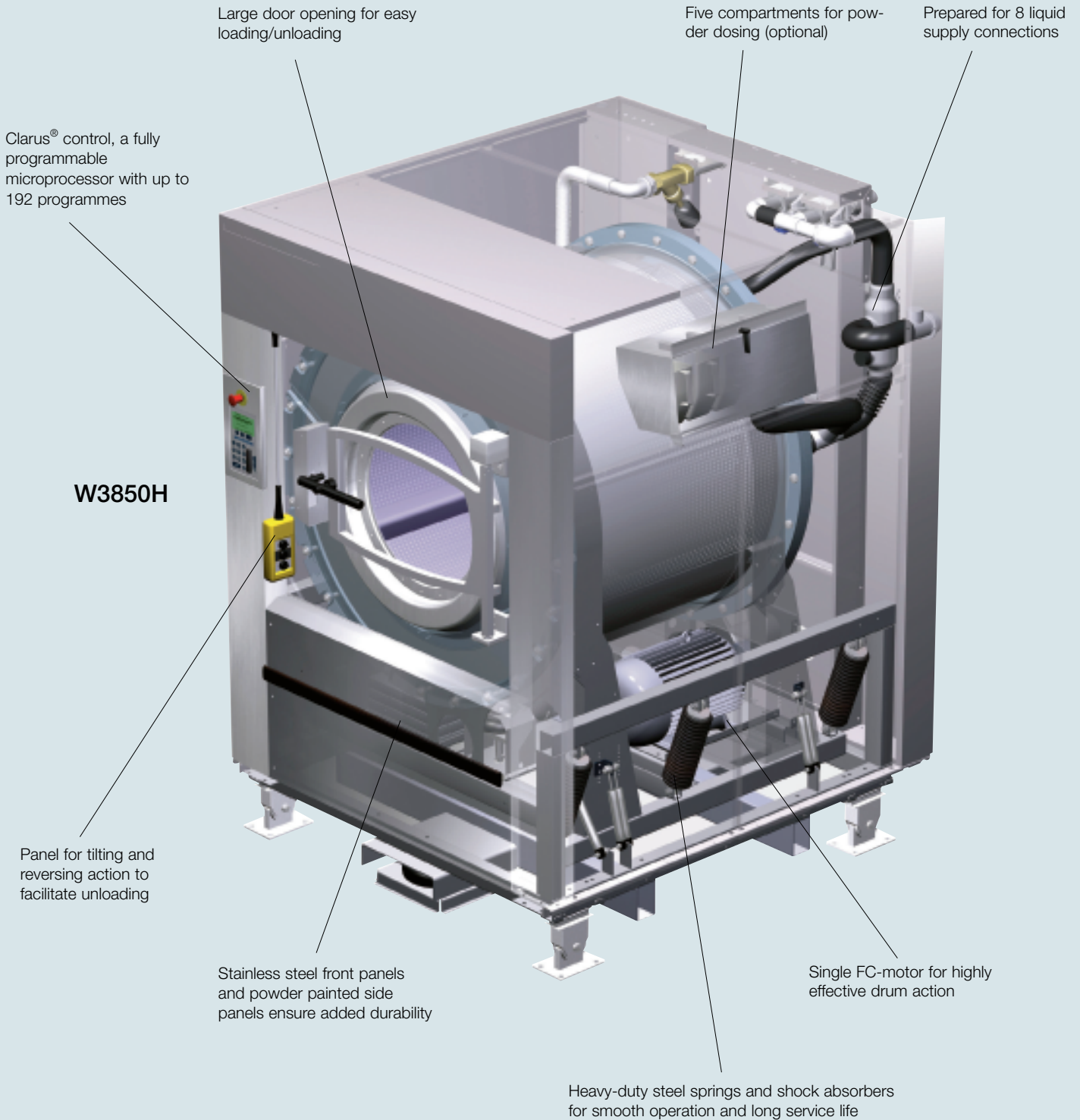
Designed for the operator, these machines are simple to use and easy to take full advantage of. They feature a large door opening, 700 mm (models W3850H and W31100H) in diameter, for easy loading and unloading. As an option, the machines can be fitted with noise and heat insulation — reducing noise levels to 70dB(A) for a more pleasant working environment.



You can quickly and easily create or change wash programmes directly on the keypad of the machine or by using the smart memory card to download wash programmes from your computer.

Features and benefits

W3400H, W3600H, W3850H and W31100H



Options and accessories to meet the needs of your laundry

Tilting system and Transpo 40 trolley

Designed for our larger washer extractors, the pneumatic tilting system is an important ergonomic option. It is ideal for fast-paced professional laundries since it takes the strain out of heavy loading and unloading.

A perfect complement to the tilting system is the Transpo 40, a transportation trolley fitted with a conveyor belt. It is a user-friendly solution for getting large amounts of wet laundry from the washer extractors to the tumble dryers — quickly and easily.



Transpo 40 trolley

DBS

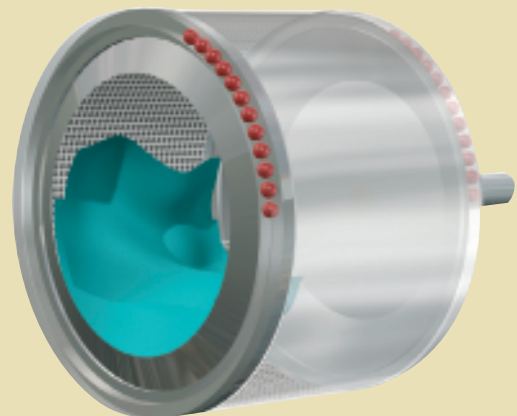
The Dynamic Balancing System™ (DBS) is a simple mechanically but ingenious system that counteracts imbalances in the drum. Because DBS eliminates vibration, the machine can be installed almost anywhere in the building — including sensitive upper-floor installations in office buildings where noise and vibrations would be unacceptable. DBS is ideal for laundering netted or bagged loads, which tend to cause imbalances in conventional washers.

Integrated Weighing System™

The Integrated Weighing System™ (IWS) is only available for Electrolux washer extractors fitted with Clarus® control. IWS helps ensure correct dosing of water and detergents, and eliminates the time and effort involved in weighing each load on scales. External load cells located in the feet of the machine weigh the contents of the drum as it is being loaded. The actual weight of the wash load is conveniently displayed on the Clarus® control panel.



IWS



DBS

Hydro extractors

Electrolux hydro extractors are the perfect complement to normal-spin washer extractors. There are two versions: suspended drum; and rigid mount drum (suitable for marine installations). With an extraction speed of 1,450 rpm, Electrolux hydro extractors ensure a high de-watering capacity, saving time and reducing energy consumption.

Designed for maximum user safety, our hydro extractors feature a monitoring system that makes sure that the lid is securely locked until the drum has come to a complete stop. In addition, the cycle is automatically stopped if the load becomes unevenly distributed in the drum. To ensure a long, active service life, the cabinet features a rugged construction and is manufactured in high-quality stainless steel.

The hydro extractors can be supplied with payment systems (optional).



Hydro extractors

Model	C240	C260	C240R	C260R	C290R
Standard product	SOFT MOUNT		RIGID MOUNT		
Drum volume in liters	38	58	38	58	88
Dry weight capacity Kg	8	12	8	12	18
Dry weight capacity lbs	18	26	18	26	40
Rpm	1450	1450	1450	1450	1450
G-factor	440	575	440	575	705
Width (mm)	515	640	515	640	770
Depth (mm)	660	785	660	685	910
Height (mm)	850	870	910	980	1050



Water re-use option

Save water with water re-use option

By using recycled rinse water in the pre-wash, water consumption can be reduced by 20–30 percent. This is in addition to the 25 percent saved with our standard machine. A 20–25 kg washer extractor uses about 500 liters of water in a programme that consists of pre-wash, main wash and 4 rinse cycles. With the water re-use option, you can recycle up to 100 liters of water with each wash. This option includes an extra inlet for re-used water and dual drain valves that direct water either to a drain or to a tank. The system can be connected to a central tank or to an integrated base tank.

Tanks for storage or fluff collecting

As an accessory, we can supply the integrated base tank for a complete water re-use system. It is available in a range of shapes and sizes to meet your specific installation requirements. We also offer a specially designed, stainless steel tank for fluff collecting. It reduces cleaning and maintenance requirements and protects your drains from clogging.

Base – an ergonomic accessory

All Electrolux washer extractors can be mounted on a stainless steel base. By taking the “bending” out of loading and unloading, the base frame is an important contribution to the ergonomics of your laundry.



The intelligent laundry

Monitoring and validating the wash process with CMIS



The Certus Management Information System™ (CMIS) is a software that connects any Electrolux washer extractor equipped with Clarus® control, dryers with Selecta® control and/or IC448 series ironers, in a network. It gathers detailed information about operating times, wash sequences, temperatures and the consumption of water, energy and detergent — per wash, programme and machine. You can monitor and control the entire wash process, and use the process data for validation and quality control.

Intelligence for greater productivity

By adjusting the wash programme, you can reduce total wash time so that you can wash more loads without compromising quality. With the Integrated Weighing System™ (see page 12), you can also optimise your processes according to the amount and weight of each wash load.

CMIS provides a user friendly interface that presents all information in an easy to understand and easy to use manner. It requires minimal training so that you can experience the benefits immediately. CMIS is also an innovative tool for developing and

The process receipt shows all wash data for monitoring and validation. This high degree of quality control will impress any customer. And it comes from Electrolux, a globally trusted brand.

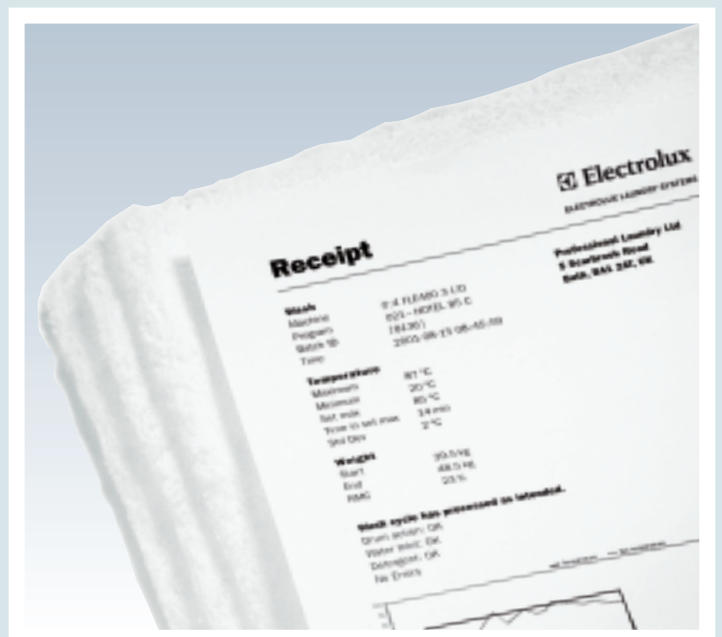
CMIS compiles all relevant data on each machine, programme and wash cycle — and graphs it for easy analysis, quality control and process improvement.

supporting preventive maintenance routines. For additional flexibility and intelligence, CMIS is easily integrated with the dosage systems of detergent suppliers.

Proof of your commitment to quality

For customers with special hygiene demands, CMIS gives you true process validation. It is proof of your commitment to quality and value — making your operation more attractive and strengthening your competitiveness.

For further details on CMIS, we refer to the separate CMIS brochure.



Introducing the Hands-Off System

To take the strain out of heavy manual handling in professional laundries, Electrolux Laundry Systems has developed a "Hands-Off System" which can be used on its W3850H and W31100H washer extractors.

The Hands-Off System is a fully automated process. Loading is done via sling-bags; the machine in is a backward-tilted position. After washing, the machine tilts forward and the laundry is unloaded onto a conveyor trolley. The conveyor trolley then brings the load to the tumble dryer(s).

The Clarus® control is installed in a separate control panel for easy operation



Hands-Off System, loading



Hands-Off System, unloading

W3850H/W31100H	Hands-Off System	Standard Model
Motor driven loading hopper	Yes	No
Motor driven door	Yes	No
Forward Tilting	Yes	Yes - option
Backward Tilting	Yes	Yes - option
Separate control panel	Yes	No

Contact Electrolux Laundry Systems to find out more about how to install and configure the washers with the Hands-Off System to existing or new sling-bag systems.

Product selection guide

Electrolux high-spin washer extractors



	Model		W455H	W365H	W375H
		Comments			
Capacity	Drum volume in liters		53	65	75
	Dry weight capacity Kg		5.5	6.5	7.5
	Dry weight capacity lbs		12	14	17
Extraction	Rpm		1300	1100	1100
	G-factor		425	350	350
Dimensions	Width x depth x height mm		595/680/850	720/690/1115	720/690/1115
	Heating alternatives				
	Non-heated	For hot water connection	○	○	○
	Electric		○	○	○
	Electric with special heating elements	For floor mop washing	—	○	○
	Direct steam		—	○	○
Consumption data: Normal 60°C programme (without pre-wash, 3 rinses at rated capacity, electrical heating)					
	Water	Liters cold and hot per load	52/9	68/12	75/17
	Electricity	kWh per load	0.55	0.6	0.7
	Time	Minutes per load	46	44	46
Design features					
Front panel	Painted	Emerald green, yellow or white	●	●	●
	Stainless steel		○	○	○
Side panel	Painted	Grey or white	●	●	●
	Stainless steel		—	○	○
Top panel	Stainless steel		●	●	●
Functional Features					
Controls	Exacta control® (semi-programmable)	Coin-ops, smaller OPL's	—	●	●
	Compass control® (semi-programmable)	Coin-ops, smaller OPL's	●	—	—
Weighing systems	Clarus control® (fully programmable)	OPL, Lagoon™, industrial	—	○	○
	Automatic Weighing System (AWS)	Exacta control® only	●	●	●
	Integrated Weighing System™ (IWS)	Clarus control® only	—	—	—
Drain	Water-operated drain valve		●	●	●
	Electrically operated drain valve		○	○	○
	Electric drain pump		○	○	○
Water recovery system	Dual drain valve and extra inlet	For water re-use	—	—	—
Detergent supply	Detergent box	Number of compartments	●4	●4	●4
	Automatic liquid supply		○	●	●
Water inlet	Automatic liquid supply, 4 extra pump signals	Clarus control® only	—	○	○
	Hot & cold water inlet valves		●	●	●
	Third water inlet valve		—	—	—
	Large inlet water valves (DN50/2")		—	—	—
Payment activation	Spray nozzle in door for impregnation	Clarus control® only	—	—	—
	Coin meter	Exacta control® only	○	○	○
	Chipcard reader	Exacta control® only	○	○	○
	Connection to central payment system	Exacta control® only	○	○	○
Motor	Frequency-controlled motor		●	●	●
Noise reduction	Extra noise insulating panels	Reduces noise	—	○	○
	Dynamic Balancing System™ (DBS)	Reduces noise and vibration	—	—	—
Operation monitoring	Water test tap and level tube		—	—	—
	External communication cable		—	—	—
	Output for external signal/flash light	Clarus control® only	—	○	○
Loading systems	Tilting forward		—	—	—
	Tilting forward and backward		—	—	—
	Front-mounted loading hopper		—	—	—
Accessories					
Foundation	Steel base	Convenient height	○	○	○
Water recovery system	Integrated base tank	For water re-use	—	—	—
	Tank with lint collector		○	○	○
Detergent pump system	DeterDose	4 pumps	—	○	○
Special product variants (standard product + optional features)					
Lagoon™	Including Clarus control® with Lagoon™ programmes, stainless front, spray nozzle in door		—	—	—
Mop Clean	Including Exacta control® with mop programmes, electric special heating elements		—	○	○

- Standard
- Option
- Not available

Product selection guide

Electrolux normal-, medium- and extra-spin washer extractors



Model		W375	W385		W3105	
Standard product		N	N	M	N	M
Capacity	Drum volume in liters	75	85	85	105	105
	Dry weight capacity Kg	7.5	8.5	8.5	11	11
	Dry weight capacity lbs	17	20	20	25	25
Extraction	Rpm	528	528	694	494	649
	G-factor	81	81	140	81	140
Dimensions	Width (mm)	660	660	660	720	720
	Depth (mm)	690	730	730	705	705
	Height (mm)	1115	1115	1115	1200	1200
Heating alternatives						
	Non-heated	For hot water connection	○	○	○	○
	Electric		○	○	○	○
	Direct steam		○	○	○	○
Consumption data: Normal 60°C programme (without pre-wash, 3 rinses at rated capacity, electrical heating)						
	Water	Liters cold and hot per load	78/15	88/17	88/17	113/20
	Electricity	kWh per load	0.7	0.85	0.85	0.95
	Time	Minutes per load	38	39	41	42
Design features						
Front panel	Painted	Emerald green	●	●	●	●
	Stainless steel		○	○	○	○
Side panel	Painted	Dove grey	●	●	●	●
	Stainless steel		○	○	○	○
Top panel	Stainless steel		●	●	●	●
Drum	Large perforation, inner drum	Hygiene, sluice function	○	—	—	○
Functional Features						
Controls	Classic control (non-programmable)	Coin-ops, smaller OPL's	●	●	●	●
	Exacta control® (semi-programmable)	Coin-ops, smaller OPL's	○	○	○	○
	Clarus control® (fully programmable)	OPL, industrial	○	○	○	○
Drain	Water-operated drain valve		●	●	●	●
	Electrically operated drain valve		○	○	○	○
	Electric drain pump		○	○	○	○
Water recovery system	Dual drain valve	For water re-use	—	—	—	—
Detergent supply	Detergent box	Number of compartments	●4	●4	●4	●4
	Automatic liquid supply		●	●	●	●
	Automatic liquid supply, 4 extra pump signals	Clarus control® only	○	○	○	○
Water inlet	Hot & cold water inlet valves		●	●	●	●
	Third water valve		—	—	—	—
Payment activation	Coin meter	Classic and Exacta controls	○	○	○	○
	Chipcard reader (Single System)	Classic and Exacta controls	○	○	○	○
	Connection to central payment system	Exacta control® only	○	○	○	○
Motor	Frequency-controlled motor		—	●	—	●
Accessories						
Foundation	Steel base	Convenient height	○	○	○	○
Water recovery system	Water re-use tank with dual drain valve		—	—	—	—
Special product variants (standard product + optional features)						
Farm	Exacta control® with farm programmes, timer for delayed start, stainless steel cabinette		○	—	—	○
Hygiene	Exacta control® with hygienic programmes & sluice function, inner drum with larger perforation		○	—	—	○

● Standard

○ Option

— Not available

N Normal-spin

M Medium-spin

X Extra-spin

G-factor 81

G-factor 140

G-factor 220 and 300



W3130		W3180		W3250		W3330		W3280X	W3350X	W3600X
N	M	N	M	N	M	N	M	X	X	X
130	130	180	180	250	250	330	330	280	350	600
13	13	18	18	25	25	33	33	28	35	60
30	30	40	40	55	55	75	75	65	80	135
494	649	471	619	446	587	428	561	805	650	630
81	140	81	140	81	140	81	140	300	220	220
720	720	750	750	830	830	910	910	935	1085	1145
790	790	880	880	955	955	1040	1040	970	1105	1375
1200	1200	1325	1325	1410	1410	1445	1445	1455	1570	1670
○	○	○	○	○	○	○	○	○	○	○
○	○	○	○	○	○	○	○	—	○	○
○	○	○	○	○	○	○	○	○	○	○
122/25	133/24	183/32	187/33	266/46	266/46	335/61	335/61	312/0	320/67	598/105
1.45	1.2	1.45	1.7	2.3	2.35	3.1	3.1	0.7	4.5	7.5
44	47	43	46	45	47	47	49	45	49	45
●	●	●	●	●	●	●	●	—	—	—
○	○	○	○	○	○	○	○	●	●	●
●	●	●	●	●	●	●	●	●	●	●
○	○	○	○	○	○	○	○	○	○	○
●	●	●	●	●	●	●	●	●	●	●
—	—	○	—	○	—	—	—	—	—	—
●	●	●	●	●	●	●	●	—	—	—
○	○	○	○	○	○	○	○	●	●	—
○	○	○	○	○	○	○	○	○	○	●
●	●	●	●	●	●	●	●	—	—	—
○	○	○	○	○	○	○	○	●	●	●
—	—	—	—	—	—	—	—	—	—	—
○	○	○	○	○	○	○	○	—	—	—
●4	●4	●4	●4	●4	●4	●4	●4	●4	●4	○5
●	●	●	●	●	●	●	●	●	●	●
○	○	○	○	○	○	○	○	○	○	○
●	●	●	●	●	●	●	●	●	●	●
○	○	○	○	○	○	○	○	○	○	○
○	○	○	○	○	○	○	○	●	●	—
○	○	○	○	○	○	○	○	—	—	—
○	○	○	○	○	○	○	○	—	—	—
○	○	○	○	○	○	○	○	—	—	—
—	●	—	●	—	●	—	●	●	●	●
○	○	○	○	—	—	—	—	—	—	—
○	○	○	○	○	○	—	—	○	○	○
○	—	○	—	—	—	—	—	—	—	—
—	—	○	—	○	—	—	—	—	—	—



Electrolux Professional: a Company in the Electrolux Group, the world's No. 1 choice.
Electrolux Professional is a world leader in the production and distribution of professional food service and laundry solutions. With the highest R&D investment in its industry, Electrolux Professional is committed to thoughtful innovation, helping its partners win with their customers, for the consumer.