



®

TEXFINITY

INDUSTRIAL LAUNDRY APPLIANCES

Powered by



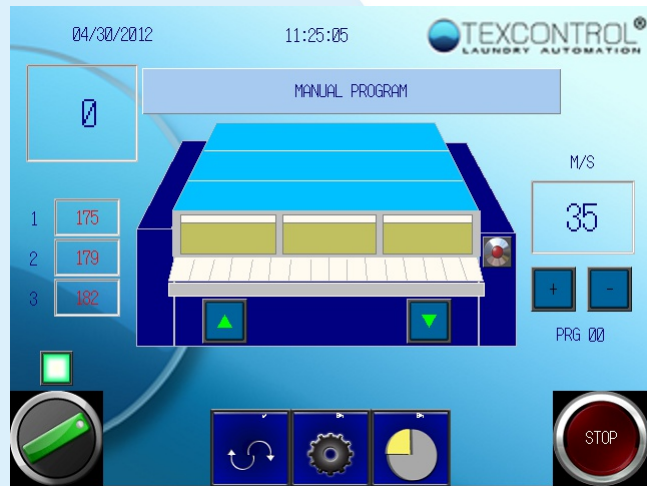
Ironer Controller

State of the art controller for all brands of Ironers

Applying the TEXCONTROL Ironer control system empowers you to monitor and increase the production efficiency of your Ironer. The 5.7, 8.4 or 10 inch touch screen makes it easy to operate and shows an instant clear overview screen with alarms and message text to facilitate fault tracing.

Ironer Control Features:

- flexible for all types of Ironers
- for 1, 2 and 3 roll heated ironers, all widths and all diameters.
- with or without inverter drive control of the speed
- interfaces with all feeders and folders, to adjust speed. Either via analog or digital signals or up down control inputs
- analog and digital speed information output
- automatic control of roll pressure
- visualization of in and outputs to improve fault detection
- forward and reverse control to facilitate changing the felt
- world wide component support
- internet connection for remote support
- can be integrated in TEXVIEW application
- competitive price



Integrated with TEXVIEW

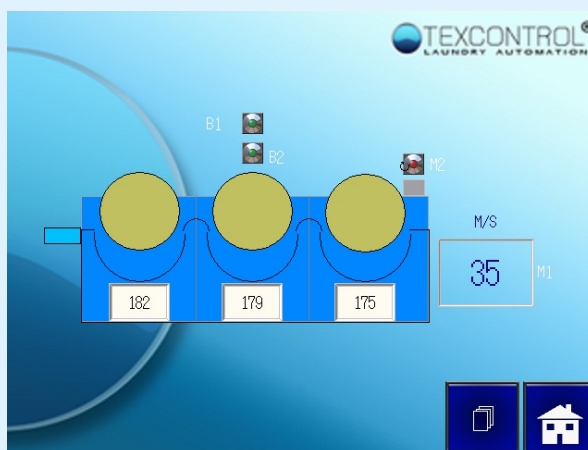
The TEXCONTROL Ironer control is prepared to be connected to the TEXCONTROL Management Information System TEXVIEW. This will give managers, engineers and operators detailed information about production figures, rejects, downtime, errors, warnings and other statistic data.



www.texfinity.com

Technical Specifications

- High Screen resolution and a choice of touch screens: 5,7", 8,4" or 10 inch.
- Connection from PLC to inputs/outputs with standard Ethernet CAT5E cable.
- Software update by Ethernet or Flash Card.
- Full backup and restore capability.
- Ethernet connection enables the support over the internet as well internally in the laundry as remotely from the Texfinity offices.
- Automatic parameter backup on internal flashcard. No data loss in case of an empty battery.
- STN or TFT touch screen with 32.768 colors
- Perfect brightness to improve readability in all circumstances
- Long life back light (min. 75.000 hours)



Program Specifications

The Ironer control has following features which improve the management of the system and increase productivity and efficiency:

- Integration with feeders and folders, allowing to control the ironer settings from either the feeder or the folder control. (only possible with compatible controllers)
- The controller can add inverter drive control to the existing ironer, reducing start up currents and improving speed control. This also will facilitate the speed control from either folders or feeders from any brand
- Control of speed via either serial link (modbus, ethernet ...) or via an analog signal or with discrete up down signals.
- The touch screen color LCD shows the status of the ironer, temperatures of the chests, speed, pressure and state of the rolls.
- The parameters of the Ironer can be accessed and adapted from the overview screen, as well as from the TEXVIEW software, running on a PC.
- iPad or tablet support via the overview system, to monitor your systems remotely.
- Alarm and error lists and provided with English, French, Spanish or Dutch user manual.