
FUTURAIL LAUNDRY HANDLING SYSTEMS

Sorting – storage – transport – production control systems



JENSEN®

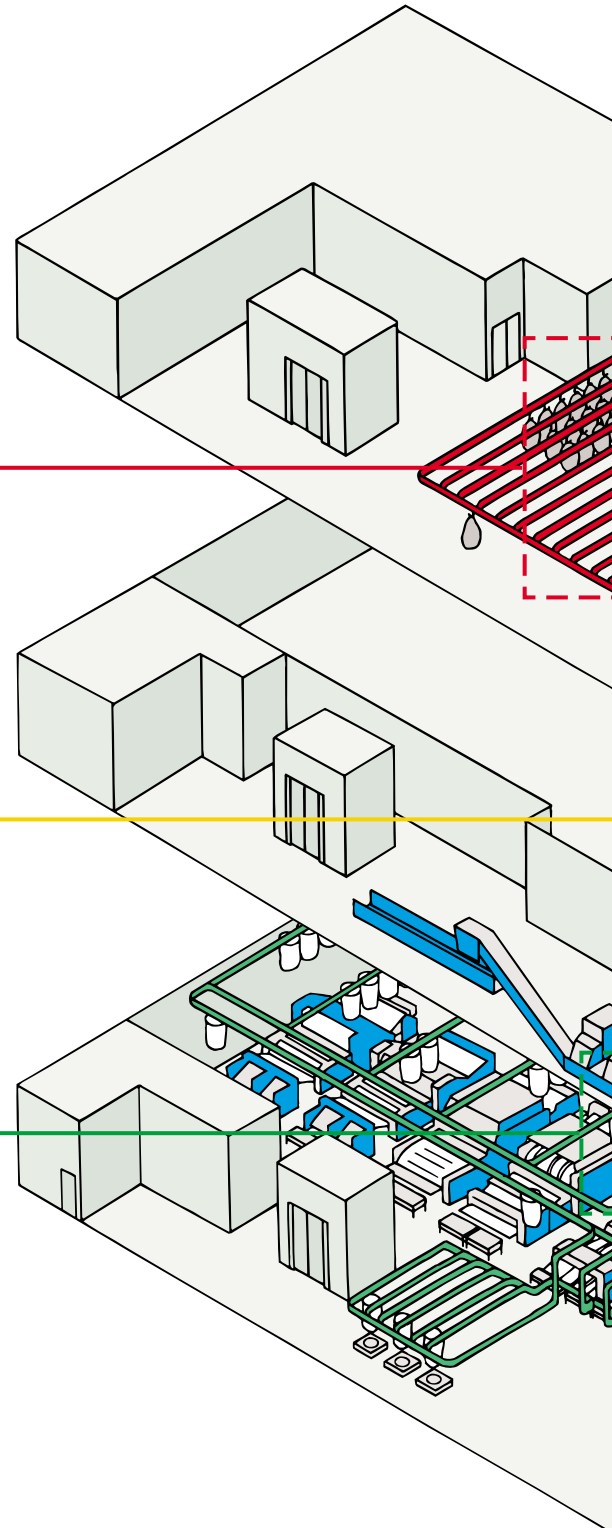
**World leader in customised
laundry handling solutions and logistics systems**

SOILED LINEN STORAGE



Automated system for storage of soiled linen prior to sorting.

FUTURAIL LAUNDRY



AUTOMATIC DISCHARGE INTO TUNNEL WASHERS



Automatic feeding of tunnel washers or washer extractors.

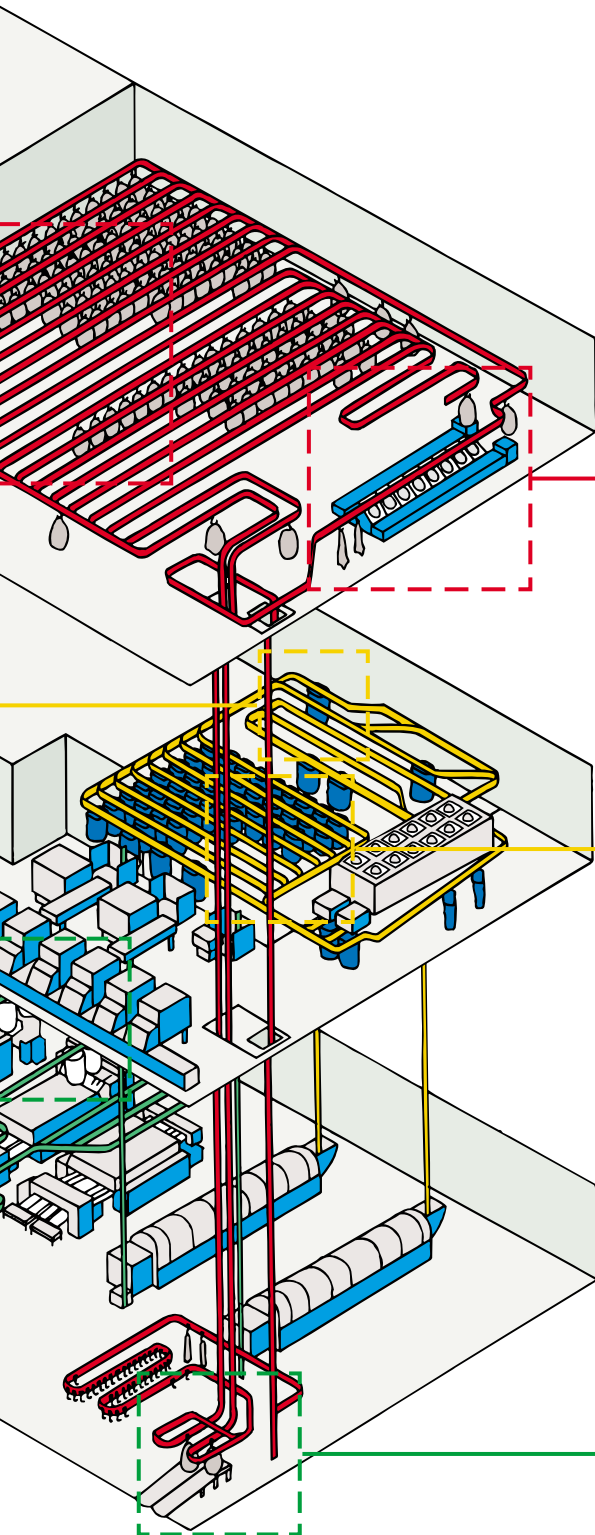
CLEANWORK STORAGE AND DISTRIBUTION



Cleanwork bag discharge stations.

- **Supplier of automated laundry handling solutions since 1967**
- **More than 1500 Futurail installations worldwide**
- **Extensive worldwide support network through JENSEN Sales & Service Centres and JENSEN distributors**

HANDLING SYSTEMS



Automatic sorting system with carousel sorting belt arrangement returning the unsorted linen to the operators. Here the Futurail MULTI-Sort System.

High level storage system for classified linen allowing floor space to be utilized for the storage of soiled linen.

Primary bag loading position.

SOILED LINEN SORTING



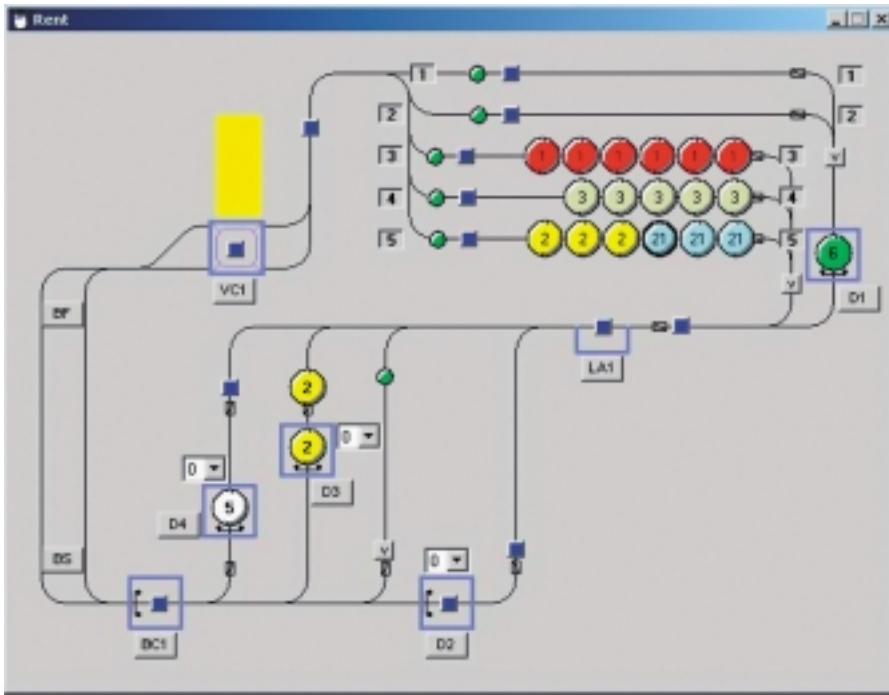
CLASSIFIED LINEN STORAGE



SOILED LINEN RECEPTION



- Specialists in laundry logistics and planning
- Futurail production control, visualization and management information systems can be integrated with the JENSEN Jenview, the total laundry production support software system



Futurail Control System

Futurail Systems are controlled by industrial PLCs that are linked to PC Terminals or HMI (Human/Machine Interface) units to provide the necessary operator interface.

The following control features are available:

- Easy-to-use colour graphics

- Unique production control/scheduling software
- Reporting package with production and/or account based reports
- Comprehensive engineering/diagnostics capability
- Modem and telephone based software support
- Fully compatible with *Jenview Production Support Software*

Futurail Vertical Conveyor (V/C)

- Electric or pneumatic drive
- Precision linear guides for reliable bag transfer
- Dual chain for safe operation (electric drive only)
- Motor at ground level for easy replacement (electric drive only)
- Variable speed drive for fast and smooth operation (electric drive only)



The new TRANS-Sort system needs no elevated platform or excavation.



Futurail's aluminium rail and glass-reinforced zytel trolley.



Precise batch size loaded directly into the wash tunnel.

www.jensen-group.com

– A world of competence

LSG JENSEN GROUP
– the heavy-duty laundry division in LSG,
Laundry Systems Group

The JENSEN GROUP's world of competence comprises the following JENSEN brand names:

- JENSEN** – the market leader in finishing automation
- METRICON** – the world's most advanced garment sorting and handling system
- SENKING** – the market leader in washing equipment
- FUTURAIL** – world leader in customised laundry handling solutions and logistics systems
- D'HOOGHE/L-TRON** – the washer extractor and dryer product range

JENSEN

JENSEN GROUP