



®

TEXFINITY

INDUSTRIAL LAUNDRY APPLIANCES

# TEXVIEW management information system

## Complete Laundry Overview from behind your PC

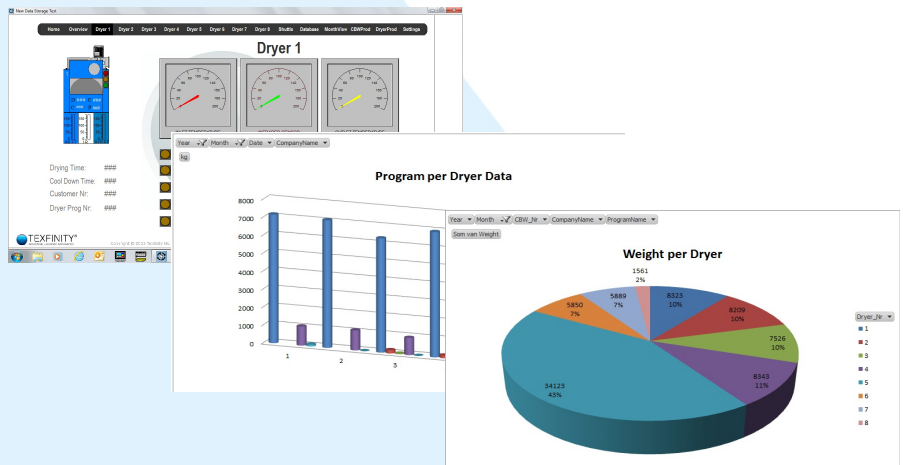
The TEXVIEW laundry management information system (MIS), is a PC based software tool that integrates all TEXCONTROL compatible controllers in one place. With this system the information of all laundry machines running TEXCONTROL controllers is available in real time.

## TEXVIEW MIS Benefits:

The TEXVIEW System is the perfect tool for optimizing your production in the laundry's washing and finishing department. TEXVIEW provides you with historical data on previous production in the laundry and allows you to study selected historic production flows. This is of great help to you, when you look for potential ways to optimize your finishing production and efficiency.

Benefits of TEXVIEW:

- Visualize the realtime production information
- Analyse customer data to discover non-profitable customers
- Detect deterioration of equipment through progressive data analysis
- Subtract invoicing data
- Analyze article volumes

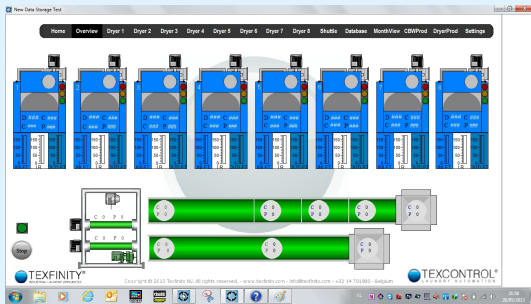


## TEXVIEW MIS Features:

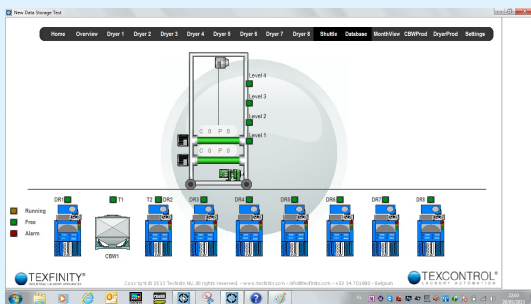
- Windows based control software
- Easy access to all connected machines running TEXCONTROL software
- Real time data available on screen
- One user interface to manage all machines
- One place to monitor and manage alarms and errors
- Central overview of production data
- Open connection to Microsoft Excel for easy & flexible reporting
- Internet connection for remote support
- Competitive price

# Laundry Overview System

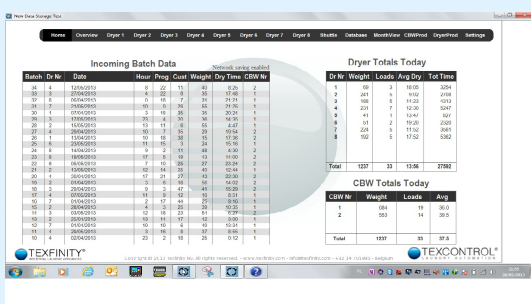
The TEXVIEW laundry management information system (MIS), centralises the control and overview of all equipment running on TEXCONTROL controllers and connected to the TEXVIEW system. Overview of the laundry as well as details of individual machines can be viewed and controlled.



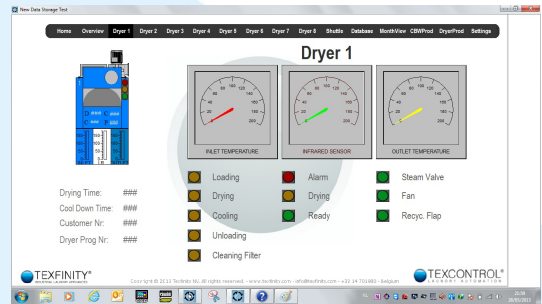
Overview of the dryer section behind a continuous batch washer, with the status of each dryer and location of the linen per customer.



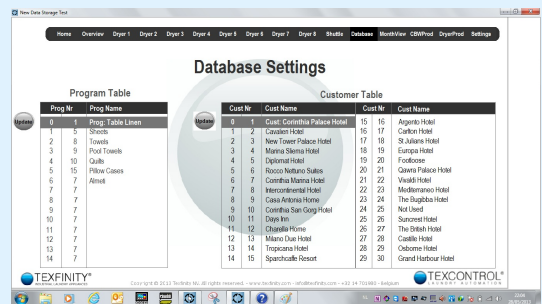
Remote visualisation of shuttle and transport systems. This will tell you real time where which linen is, including customer, program and weight information.



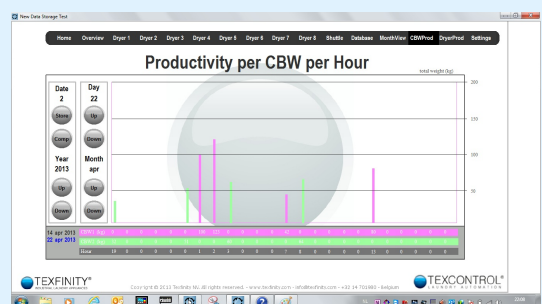
Live monitoring of incoming data with real time daily totals for quick analysis and problem solving. Each screen is customizable to the requirements of the customer.



Individual machines can be monitored or operated from the TEXVIEW systems. e.g. for a Dryer, Input and output temperatures, drying times and alarms can be viewed.



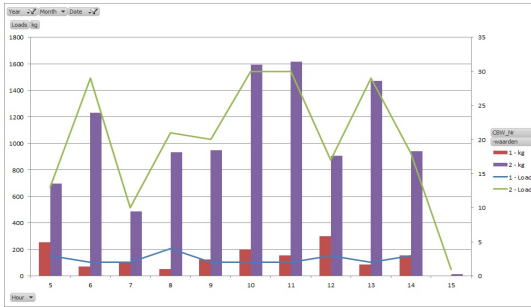
Management of your customers and programs made easy. Connection with program and customer numbers on one central place, to make all your reporting easy to understand.



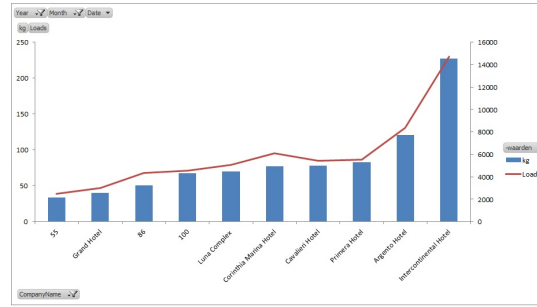
Real time hourly reports for quick reviews and consulting, to detect performance and efficiency problems on the spot, avoiding delay caused with off-line reporting tools.

# Open Database System allows for flexible and easy reporting

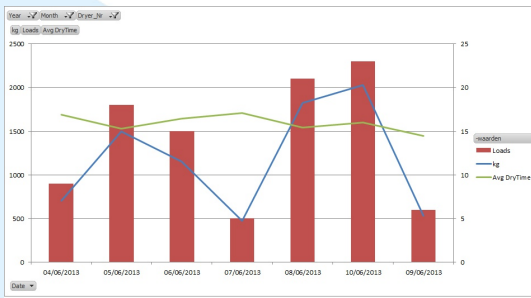
The TEXVIEW system uses standard open database systems to store customer, program and production data. Besides the analysis data integrated in TEXVIEW, real time database connections can be made to the TEXVIEW database for flexible and endless reporting possibilities.



Hourly production reporting with average production data trends to detect and compare production results and improvements.



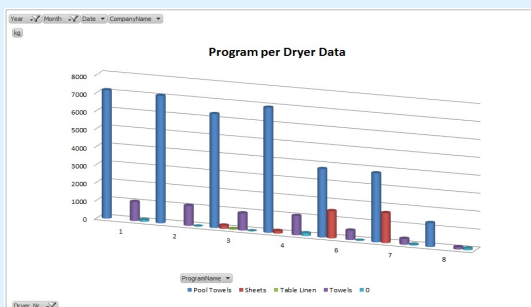
Monthly customer and article analysis, Month over month comparison, and top 10 customer reporting shows you quickly who your best customers are.



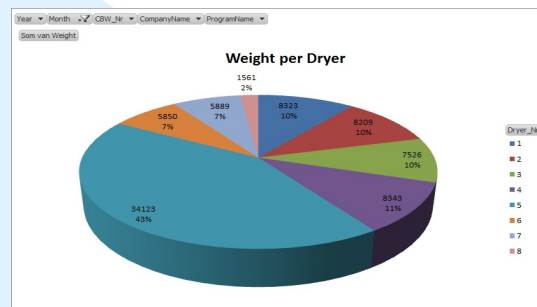
Daily production and analysis data are available, Reports per machine, per customer or per article are easy accessible.

Year		2013		Month		Jun		Date		06/06/2013		Dryer Production Data																								
Kolomlabels												kg																								
Rijlabels												Totaal Loads												Totaal kg												
5	2	1	2	3	5	1	1	1	164	68	126	270	140	46	45	90	16	949	1	2	3	4	5	6	7	8	1	2	3	4	5	6	7	8	1	13
6	2	1	5	1	17	2	1	2	78	86	218	74	606	81	18	138	31	1299	2	2	2	18	5	1	201	200	178	175	748	243	49	32	1794			
7	1	1	1	8	1	1	30	50	50	399	36	74	25	589	2	2	2	3	19	2	2	155	147	174	300	815	90	90	32	1771						
8	2	1	2	1	15	2	1	1	53	70	50	0	712	80	20	0	25	985	3	1	1	12	2	1	299	100	100	505	150	50	20	1204				
9	2	1	1	1	13	3	1	1	123	95	29	100	548	128	49	22	1072	2	2	2	3	17	2	3	86	187	182	232	639	93	136	31	1555			
10	2	2	2	2	18	5	1	1	201	200	178	175	748	243	49	32	1794	4	2	2	4	4	3	2	246	135	95	243	181	118	77	21	1095			
11	2	2	2	3	19	2	2	2	155	147	174	300	815	90	90	32	1771	15	1	1	1	1	1	1	1	1	1	1	1	1	1	1	1	1	13	
12	3	1	1	1	12	2	1	1	299	100	100	505	150	50	20	1204	Industriële	1	1	1	1	1	1	1	1	1	1	1	1	1	1	1	1	1		
13	2	2	2	3	17	2	3	3	86	187	182	232	639	93	136	31	1555	Eindtotaal	22	15	18	19	128	22	14	5	1435	1151	1052	1494	5293	1029	570	302	243	12326
14	4	2	2	4	4	3	2	2	246	135	95	243	181	118	77	21	1095																			
15	1	1	1	1	1	1	1	1	1	1	1	1	1	1	1	1	13																			

Data is available in easy to interpret Graphs or in Tables to analyse exact numbers, or for use in further internal reporting or for use in shipping or invoicing tools.



Analysis of article logistics through machines help you to detect and compare machine loads and production bottle necks.



Comparison of similar machines to detect mechanical problems or errors in the programming of the system, which are key to optimize production efficiency.



# Texview Compatibility

The TEXVIEW management information system integrates all laundry machines in the same laundry that run a TEXCONTROL machine controller. For each of the controllers a separate leaflet is available. All controllers that can be integrated within TEXVIEW are listed below. When accessing a specific control via the TEXVIEW application, the machine can be monitored, and data can be accessed. In safe mode, when the machine is not operational, programming parameters can be changed, or compared between similar machines.

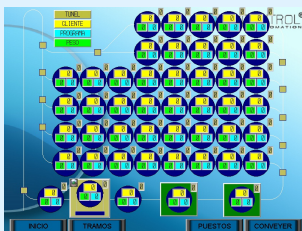


## Sorting System

Controller to support sorting of soiled linen and feed it into the bag system. The controller shows article, customer and weight of the bag and has a keyboard to enter data.

## Washer Extractor

PLC controller for all types of washer extractors, barrier, non barrier, multipocket, open-pocket, with or without frequency inverter drive.



## Bag System

For small and medium sized bag systems. The controller manages the soiled linen storage and call off. It integrates with the CBW controller to load the linen in the washer.

## Universal Feeder

Controller for automatic feeders. 1, 2, 3 or 4 feeding clamps, one or multilane operation. Production data and programs accessible from the MIS system.



## CBW Controller

Batch washer controller, contains all washing processes and interfacing with the chemical dosing equip. Prod. data, water & energy usage are available from this controller.

## Ironer Controller

Ironer operating panel, for steam and gas heated ironers, with or without frequency inverter controlled speed. Machine info available at MIS system.

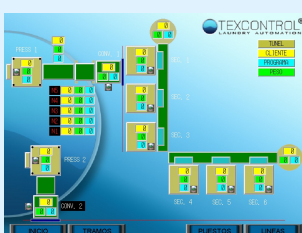


## Dryer & Shuttle Controller

Controls the drying of the linen behind the press. Drying times, temperatures, article and customer codes can be monitored.

## Universal Folder

For airblast or reverse belting technology sheet folders, on one or more lanes. Production data and customer programs accessible at PC level.



## Conveyor Controller

Drives conveyors and manages the logistics on the clean side of the laundry. Batches of clean linen can be traced and monitored at PC level.

## Towel Folder

Touch screen controller for all types of towel folders. Automatic sorting and integrating with other towel folders to facilitate central belt collection.

